

IEC61032 Standard Test Probe kits

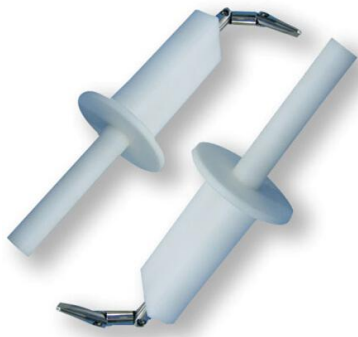


Model:AUTO-A

Standard:IEC60529,IEC61032,IEC60335,IEC61029,IEC60745,IEC60065,IEC60950.

Application: This probe is intended to verify protection of persons against access to hazardous parts for an IP1 Code. Also used to verify protection from access with the back of the hand for an IP suffix A code. The handle is made of plastic and the ball is made of stainless steel.

Test Probe B/Standard Jointed Test Finger



Model:AUTO-B

Standard:IEC61032,IEC60950,IEC60335,IEC60529,IEC60045,IEC60884,IEC69745-1

Application:This is the "International "test finger required by most IEC, EN and CSA Standards, in addition to many UL Standards. Built in strict accordance to the newest requirements - with integral palm simulator.

Test Probe C/D/E



Model:AUTO-C/D/E

Standards:IEC61032, IEC60529, IEC60335, IEC60065.

Application:Used to verify the protection of persons against access to hazardous parts. Also used to verify the protection against access with a tool. The handle and stop face are made of plastic. The rod is made of stainless steel.

IEC61032,IEC60601 4.0 mm Hazardous Live Parts Probe with model AUTO-E.

Rigid Test Probe

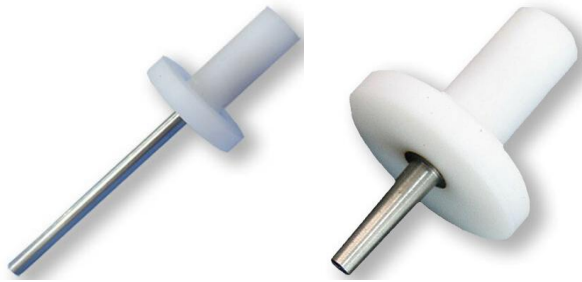


Model:AUTO-11

Standards:IEC61032 Test probe 11,IEC60065,IEC60335-1,IEC60884-1

Application: A "rigid" version of the International Test Finger, used for force applications on openings,Handle is made of plastic, rigid finger is made of stainless steel.

Test Probe 12/13



Model:AUTO-12/13

Standards:IEC61032 Test probe12 and test probe 13,IEC60065,IEC60335-1,IEC60950

Application:This pin is used on appliances for verifying that there is no access to hazardous live parts of heating elements which could be touched accidentally by a tool (i.e. screwdriver), Handle is made of nylon, tip is hardened steel.

Children Jointed Test Finger

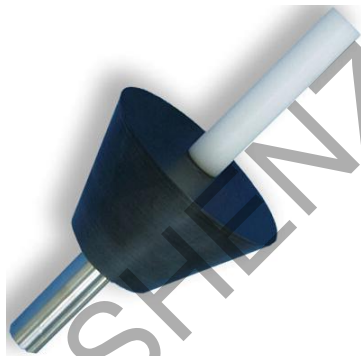


Model:AUTO-18/19

Standard: IEC 61032, Figures 12 and 13,EN71,ASTM F963

Application:These size test fingers are to test for protection against access to hazardous parts with a human finger and / or arm.The child's finger is also called out in U.S. Federal Regulations, Title 16, Volume 2, Chapter 11, Part 1500 for consumer products.

Test Probe 31



Model:AUTO-31

Standard:IEC61032 Figure 14 Test probe 31

Test probe 32

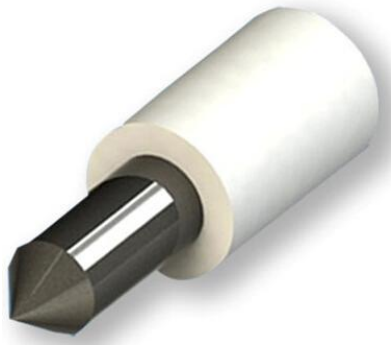


Model:AUTO-32

Standard:IEC61032

Rod:diameter 25mm,Dam-board diameter 50mm,The handle is made of plastic, tip is made of stainless steel.

Test Probe 41

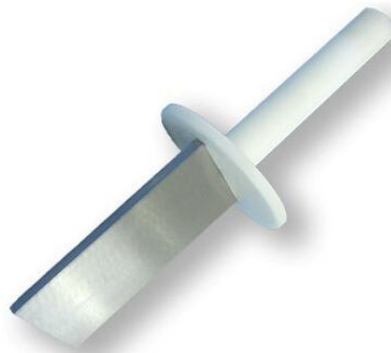


Model:AUTO-41

Standard:IEC61032 Test probe 41

Application: For testing accessibility in appliances with visibly glowing heating elements. Also for testing parts supporting such elements. The handle is made of nylon, tip is made of stainless steel.

Test Bar



Model :AUTO-43

Standard:IEC61032 Test probe 43

Web: www.hkautostrong.com

www.autostrong-test.com

Tel:0086-(0)755-26978980

E-mail:sales@hkauto.com.cn